



PMS

SDL PHARMACY MANAGEMENT SYSTEM

SYS DEV LTD is one of the most robust and leading End-to-End Software Development, Professional Skill Development and Support Solutions Company in Bangladesh providing the best Pharmacy Management System.



SDL PHARMACY MANAGEMENT SYSTEM

ABOUT US

We have developed a robust pharmacy management system called SDL Pharmacy. It can be used with Hospital and individual like model pharmacy. There are some pharmacy options connecting hospitals. Single pharmacy and multiple location based pharmacy. For example: OPD pharmacy, IPD pharmacy and General Store for procurement. In a large hospital there may use any spot or requisition based purchase and then stock transfer into OPD, IPD, OT related pharmacy locations. For IPD there may full return facilities from patients. In medium level hospitals they may have a single pharmacy having sales and purchase facilities both. There may 3 types of sales as IPD credit or due sales, OPD cash and Due sales and others day Id based cash sales. There may some return facilities from customers. We have a pharmacy management for individuals as non-connected to hospitals. In model pharmacy or others can use it.

FEATURES

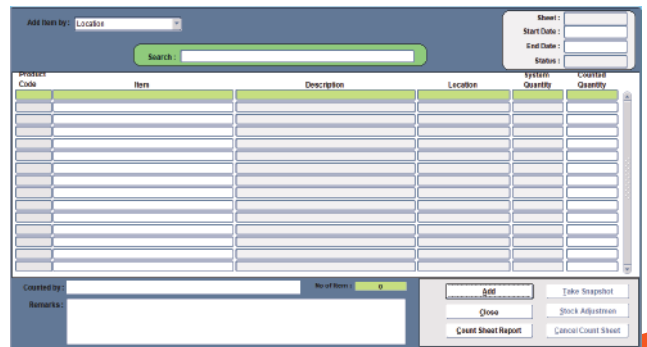
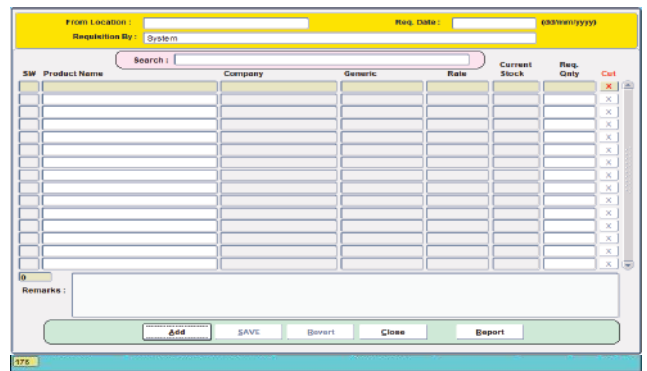
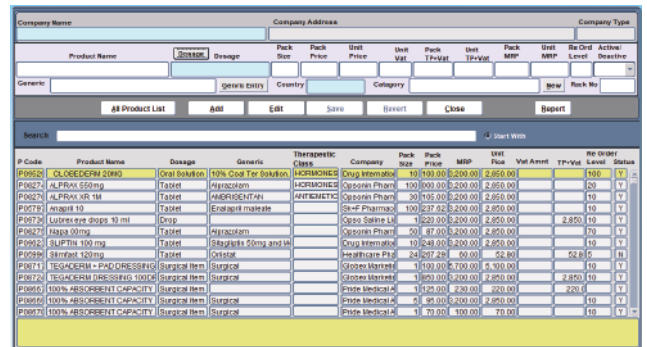
1. Company Entry
2. Product wise company define
3. Company wise requisition Raise
4. Spot purchase requisition
5. Requisition approval
6. Requisition cancel
7. Requisition Edit

Company Entry	User Panel (Pharmacy)
Product Entry (Company Wise)	Medicine Inventory
Requisition Raise(Company Wise)	Due Payment(Medicine)
Spot Purchase Requisition	Stock Adjust
Requisition Approval	Medicine Rate Update
Medicine Receive (Company Wise)	Medicine Requisition view
Medicine Receive Return	Medicine Approved view
Medicine Invoice	Demand Note Wise Product Receive
Medicine Return	Expired Medicine Receive Direct
Due Cllection(Medicine)	Expired Medicine List Entry
Location Wise Requisition	
Stock Transfer	
Return To The Previous Menu	

SDL PHARMACY MANAGEMENT SYSTEM

FEATURES

8. Company wise medicine receive
9. Medicine receive return
10. Sales invoice to patient
11. Medicine return from patient
12. Stock entry [stock in]
13. Stock adjustment
14. User panel setup
15. Re-order level setup
16. Barcoding setup
17. Banned product management
18. Batch entry system with expire date
19. Date wise bill for patient
20. View all bill/ voucher
21. Sales on Special rate
22. Shortly expire medicines report
23. Rack wise stock
24. Fast Moving Products [FMP]
25. Slow Moving Products [SMP]
26. Minimum Stock reports
27. Out of Stock Reports
28. Dummy Bill
29. Due collection against bill
30. Purchase order comparison



SDL PHARMACY MANAGEMENT SYSTEM

FEATURES

31. Stock list with or without locations
32. Daily stock movements
33. Location wise Transactions
34. Daily sales
35. Daily purchase
36. Date wise Profit & Loss statements
37. Patient wise medicine billing for out patient
38. Patient wise medicine summary
39. Date wise medicine sale summary
40. Date wise medicine return summary
41. Date wise medicine sales & returns
42. Company wise purchase statement
43. Company wise stock report
44. Generic wise product stock list
45. Doses wise product stock list
46. Product purchase / sales stock list
47. Doses wise Sales and Purchase
48. Generic wise sales and purchase
49. Product transaction
50. Expired medicine exchange or return
51. MIS Reports.

SDL PHARMACY MANAGEMENT SYSTEM

TECHNICAL : Tools and Technology

- Front End: Oracle Forms Developer 11gR2/ Apex / PHP.
- Back End (Database): Oracle Data base 12c.
- Middle Tier: Oracle web logic server.
- Reporting Tools: Oracle Report Builder 11g.
- Oracle Fusion Middle ware .
- Support tools: Team viewer, Putty, VNC.
- Report Format: PDF.
- Operating System : (server): RedHat Linux 7 +.
- Operating System : (Client/ User): Windows 8+.
- Server(DB& apps): Standard Server Based on 32-64 GB RAM.
- Client PC: Standard 2-4 GB Ram , corei3+.
- Others Tools: Standard LAN.
- 3G Internet.
- POS printer.
- Barcode Scanner.
- Barcode printer.



SDL PHARMACY MANAGEMENT SYSTEM

USER TERMS





There are two types of client's agreement. One is software sales and another subscription based.

For software sales clients will arrange server / pc for installation and we will install the software on it. There will software price and monthly support service fees.

For subscriptions client will get an url / web link and logon with the credentials to the system on cloud. There will be one-time payment and monthly subscription fees. They need no server or backup system.

CONTACT US

Give us a call for more information about our services and products

-  +880 1680-764091
-  azsikder2025@gmail.com
-  www.sysdevltd.com
-  fb.com/sysdevltd

Md. Asaduzzaman Sikder
Managing Director
Sys Dev Ltd.